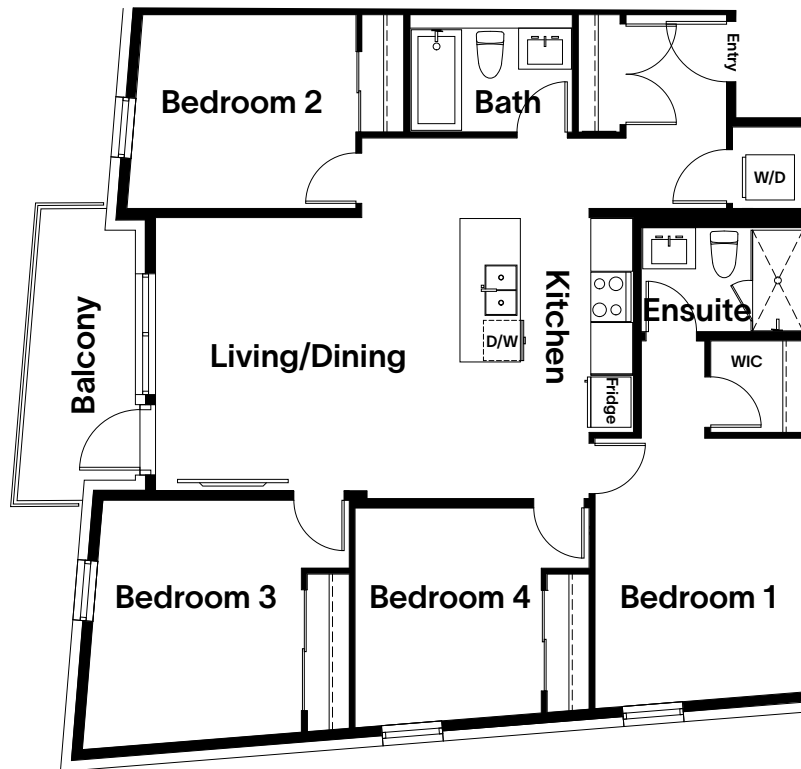


C11: 4 Bedroom

theory

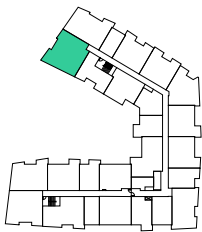
1253 sf



Homes: 206, 306, 406, 506

2 Bathrooms

Floors 2-5



- Living/Dining: 14' x 15'1"
- Kitchen: 8'8" x 10'8"
- Bedroom 1: 13' x 10'4" | walk in closet: 4'6" x 4'7"
- Ensuite: 5' x 8'
- Bedroom 2: 9'7" x 11'
- Bedroom 3: 11'10" x 10'4"
- Bedroom 4: 10'6" x 9'2"
- Bath: 5' x 8'
- Appliances: fridge, dishwasher (DW), stove, oven, microwave
- Laundry washer & dryer (WD)
- Balcony (sizes vary)

Dimensions, size, specifications, layout, direction of flooring elements, and materials are approximate only and subject to change without notice. Some plans are shown as mirrored and may have slight variations.